

MONTHLY MEMBERSHIP PROGRESS REPORT

LOCATION PAKISTAN

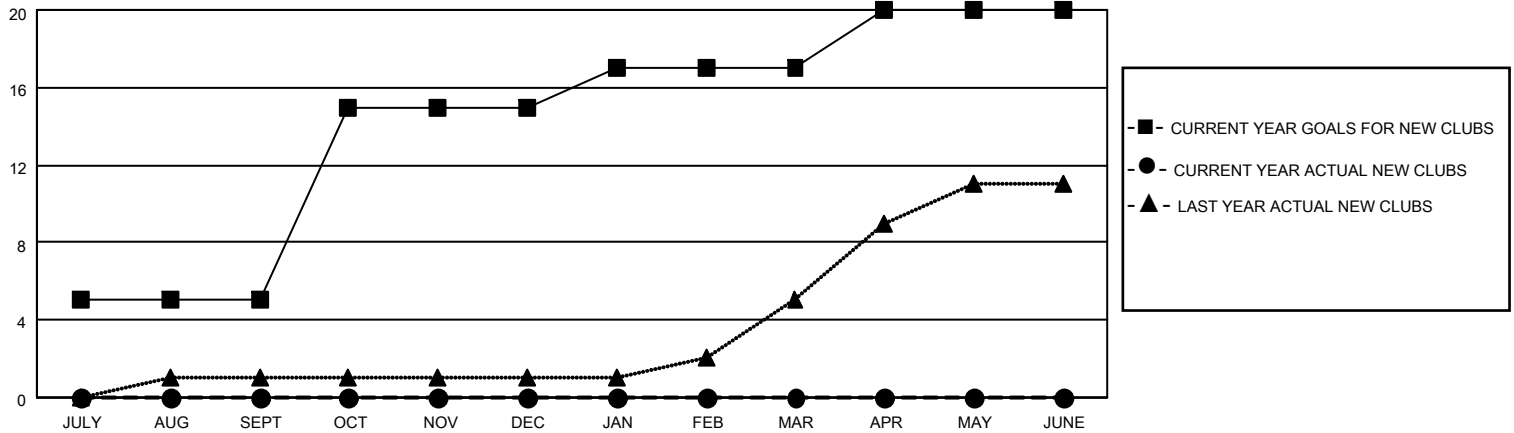
District 305 S

Results as of: 4/30/2023

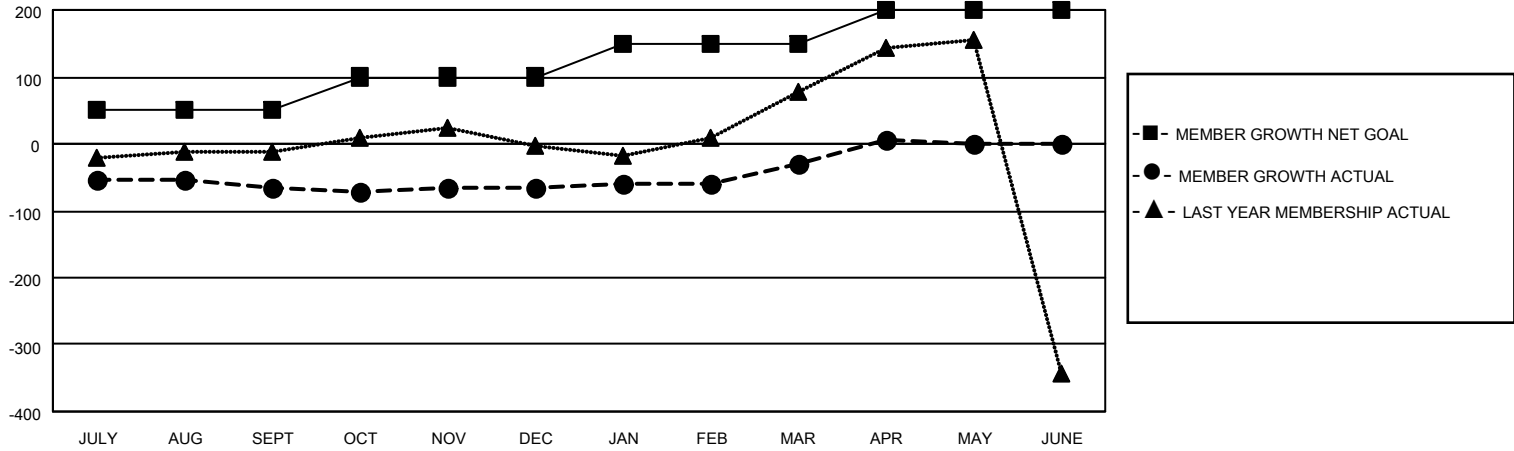
Clubs			
RESULTS FOR 2022-2023			
QUARTER	NEW CLUB GOAL	NEW CLUBS	DROPPED CLUBS
JULY/AUG/SEPT	5	0	0
OCT/NOV/DEC	10	0	3
JAN/FEB/MAR	2	0	0
APR/MAY/JUNE	3	0	0

Members			
RESULTS FOR 2022-2023			
QUARTER	MEMBER GROWTH NET GOAL	MEMBER GROWTH ACTUAL	DROPPED MEMBERS ACTUAL (including transfers)
JULY/AUG/SEPT	50	27	81
OCT/NOV/DEC	50	46	38
JAN/FEB/MAR	50	61	10
APR/MAY/JUNE	50	38	3

GOALS AND ACTUAL NEW CLUBS CUMULATIVE



GOALS AND ACTUAL MEMBERS CUMULATIVE



DROPPED CLUBS: 3

27 CLUBS OF 106 ADDED 1 OR MORE NEW MEMBERS

GENDER DISTRIBUTION

MALE	1,010 (71.08%)
FEMALE	411 (28.92%)
NON BINARY	0 (0.00%)
PREFER NOT TO ANSWER	0 (0.00%)

DROPPED MEMBERS

[CLICK HERE FOR CUMULATIVE MEMBERSHIP DATA](#)

DECEASED	2
CLUB CANCELLED	3
OTHER	127
TOTAL	132

TOTAL FAMILY UNIT MEMBERS 1,143

FAMILY MEMBERS PAYING HALF DUES 868